

DESIGNERLITE LED KS & SE RANGE

- The Designerlite LED is an economic alternative to LED panel luminaires.
- Driven by industry leading components.
- Efficacy of up to 102 lm/cW.
- 5 year warranty
- DALI driver included as standard
- Bespoke and nonstandard options available at minimal additional cost.



KS RANGE PERFORMANCE

USEFUL LUMENS: 3507 lm
 CIRCUIT WATTS: 38.2 cW
 EFFICACY: 92 lm/cW
 LED: Samsung or Philips Fortimo
 BRIGHTNESS: 2300 cd/m²

Supported by Samsung/Philips and Helvar components

SE RANGE PERFORMANCE

USEFUL LUMENS: 3717 lm
 CIRCUIT WATTS: 36.50 cW
 EFFICACY: 102 lm/cW
 LED: Samsung
 BRIGHTNESS: 2350 cd/m²

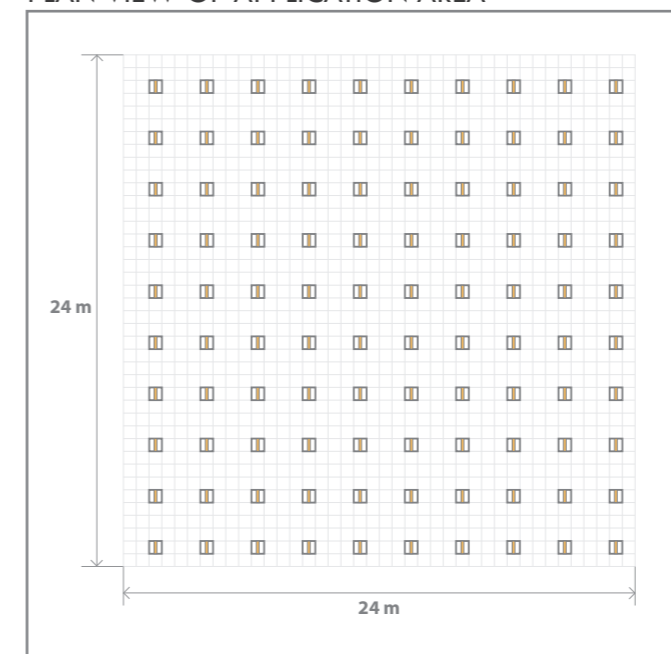
Supported by Samsung and Helvar components



APPLICATION

The performance of the Designerlite is most apparent in the context of application. The following illustrates a like-for-like fitting comparison of a 24m x 24m area with 100 fittings.

PLAN VIEW OF APPLICATION AREA



With a controls system and a DALI driver installed the output can be limited to **500 lux** at a load of **5.2 W/m²**. This would provide a well-lit and energy efficient scheme. Both the Designerlite LED KS and the Designerlite LED SE come with a DALI driver as standard.

If we take the same area and change the luminaire separation from **2.4m x 2.4m** to **3.0m x 2.4m** there will be **20% reduction of fittings** and a load of **4.93 W/m²** will be achievable.

FITTING COMPARISON 24m x 24m

Parameter	Designerlite LED KS	Designerlite LED SE	Standard Panel LED Luminaire	1 x 55W PL CAT R
Lux Average (on the working plane)	516	554	399	510
Load (W/m ²)	6.63	6.28	5.90	10.59
W/m²/100 Lux	1.28	1.13	1.48	2.08
Uniformity (3m x 3m Calc Surface)	0.90	0.90	0.91	0.91
MAX Luminance (cd/m ²)	2114	2200	2707	1400

The Designerlite LED KS and Designerlite LED SE are up to **24% more efficient** than a panel luminaire and up to **80% more efficient** than a 1 x 55W PL luminaire.

TECHNICAL

RANGES: The Designerlite LED KS is Lumitron's standard luminaire, offering significant economic and performance benefits. The Designerlite SE range is Lumitron's elite option which offers a higher luminaire efficacy and luminous output.

DESIGN: The luminaire has been built to use the latest LED technology whilst meeting the requirements of BSEN 12464. The body geometry has been developed to provide a graduated illumination which enhances visual interest.

OPTICS: The Designerlite uses the most up-to-date and efficient materials which are TPB rated. The controller materials are fully compliant and proven to be more efficient than TPA rated materials (source: E, C Harris, 2012. Department for communities and local government).

LED's: The Designerlite uses either the Samsung or Philips fortimo high performance boards depending on application. The use of high quality components stems from Lumitron's dedication to safety and compliance.

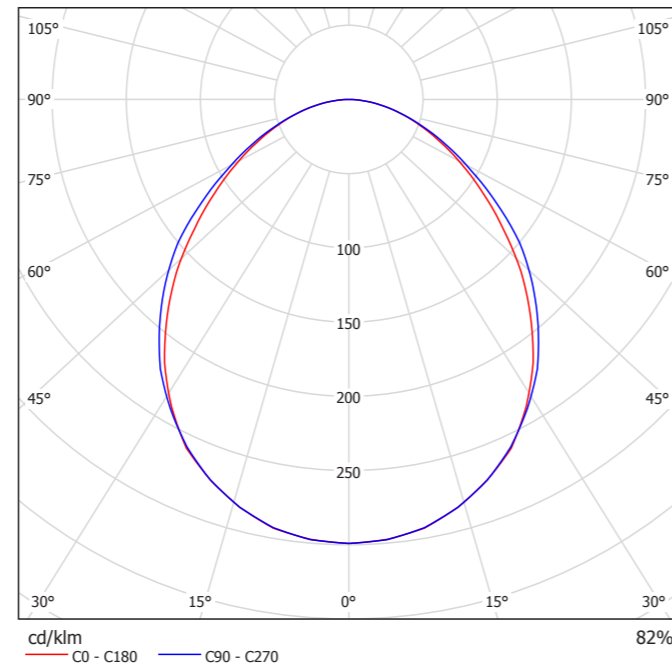
THERMAL MANAGMENT AND LIFE: The LED junctions are thermally optimised within the Designerlite luminaire. This allows an LED performance of 50,000 hrs life at L70. However, based on Philips and Samsung data the output after 50,000 hrs is likely to be >80% due to the fittings thermal capabilities (please contact for supporting evidence).

DRIVER: The luminaire comes with a Helvar DALI controller. The fittings can be tuned to optimise the lighting scheme and the energy performance (subject to suitable controls by others).

EMERGENCY: Can be supplied as a 3 hour unmonitored emergency or a 3 hour DALI monitored emergency with 1 board converted to run at reduced output.



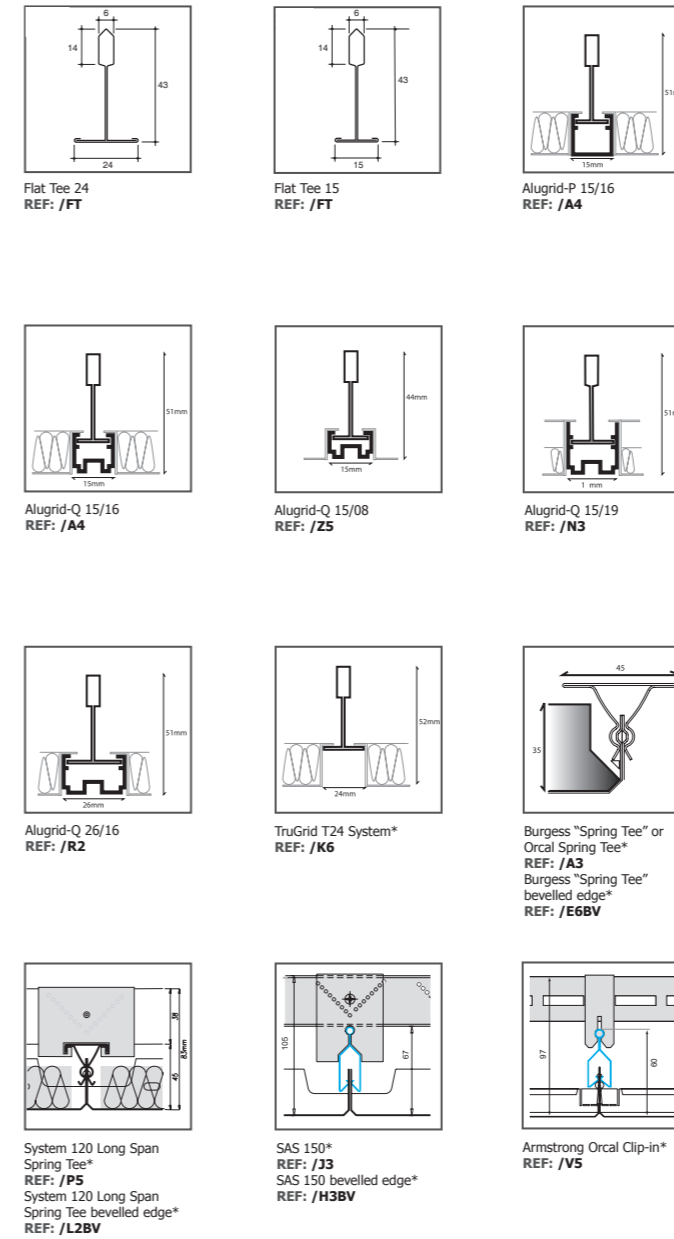
Unlit view of luminaire



Polar Curve of the Designerlite LED KS

CEILING INTEGRATION

The Designerlite is compatible with the majority of ceiling systems as shown below. If your project ceiling system is not shown here please contact Lumitron for further advice.



*Products for these ceiling systems will require external brackets (Ref: /BKTS) & may require access from an adjacent tile

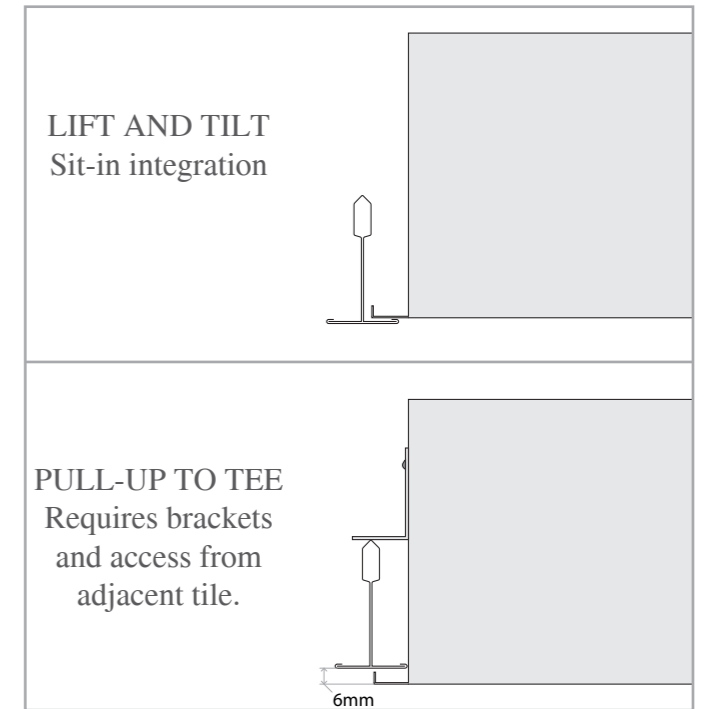
References relate to:

- Alugrid: lay-in Lift and Tilt
- Burgess, SAS12/150: Pull-up but with external brackets.
- Trugrid: Lift and Tilt with main runner brackets. The Trugrid T24 is a no cost option, brackets if required may be charged as an extra.

All above are automatically supplied in RAL9010, 20% gloss – Interpon D1036. If this brand or colour is not required we must be specifically instructed as to the required colour and brand.

Luminaire Dimensions:

595 x 595 x 90 (On pull-up option with exposed tee the void height is 84 mm)



BESPOKE

RETURN AIR HANDLING

All air handling is achieved via external perimeter slots. The width of each slot will be made to suit air flow requirements.

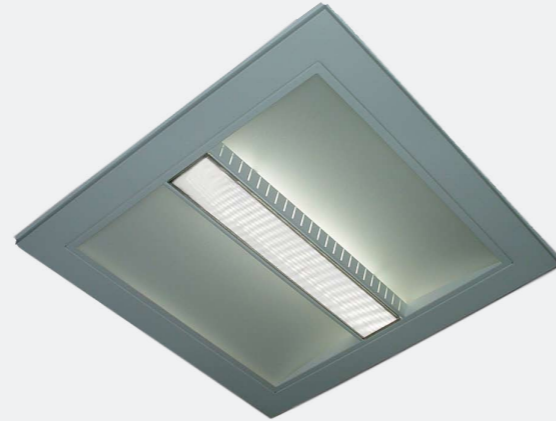
Volumetric flow rate of 20 L/s (REF: /AH20)

Volumetric flow rate of 40 L/s (REF: /AH40)



SIZE OPTION 750mm x 750mm

The Designerlite can be made to fit 750mm x 750mm Ceiling grids. (REF: /75)



DESIGNERLITE LINEAR

The Designerlite is available as a linear option. (REF: /LE)



EMERGENCY

Can be supplied as a 3 hour unmonitored emergency, a 3 hour maintained self-test emergency or a 3 hour DALI monitored emergency with 1 board converted to run at reduced output - Typically 14% BLF but this can be increased if required.

3 hour unmonitored (REF: /3M)

3 hour maintained self-test (REF: /3M ST)

3 hour DALI monitored (REF: /3M PRO)



TO SPECIFY

1 CHOOSE A RANGE

KS RANGE - REF: **KS**

or

SE RANGE - REF: **SE**

2 CHOOSE AN LED COLOUR

COLOUR 830 - REF: /830

or

COLOUR 840 - REF: /840

3 CHOOSE A CEILING SYSTEM *from page 04*

Flat Tee 24
- REF: **FT**

Flat Tee 15
- REF: **FT**

Alugrid-P 15/16
- REF: **A4**

Alugrid-Q 15/16
- REF: **A4**

Alugrid-Q 15/08
- REF: **Z5**

Alugrid-Q 15/19
- REF: **N3**

Alugrid-Q 26/16
- REF: **R2**

TruGrid T24 System
- REF: **K6**

Burgess "Spring Tee" or Orcal Spring Tee
- REF: **A3**

Burgess "Spring Tee" bevelled edge
- REF: **E6BV**

System 120 Long Span Spring Tee
- REF: **P5**

System 120 Long Span Spring Tee bevelled edge
- REF: **L2BV**

SAS 150
- REF: **J3**

SAS 150 bevelled edge
- REF: **H3BV**

Armstrong Orcal Clip-in
- REF: **V5**

4 REQUIREMENT FOR A BESPOKE OPTION? *from page 05*

RETURN AIR HANDLING - REF: /AH20 or /AH40

750 x 750 SIZE OPTION - REF: /75

LINEAR OPTION - REF: /LE

5 REQUIREMENT FOR AN EMERGENCY OPTION?

3 HOUR UNMONITORED - REF: /3M

or

3 HOUR DALI MONITORED - REF: /3M PRO

or

3 HOUR SELF TEST - REF: /3M ST

Example:

KS/830/K6 - Designerlite KS range with an 830 colour LED for use on a TruGrid T24 System.